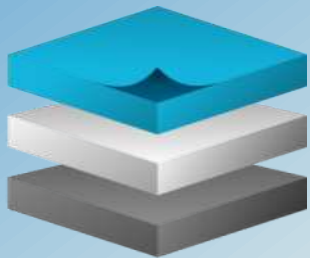




ETL tools as support for the harmonization of spatial data according to INSPIRE



li:st
location intelligence
spatial technologies

Irena Mitton, mag. ing. geod. et geoinf.

Mr. Sc. Dragan Divjak, mag. ing. geod. et geoinf.

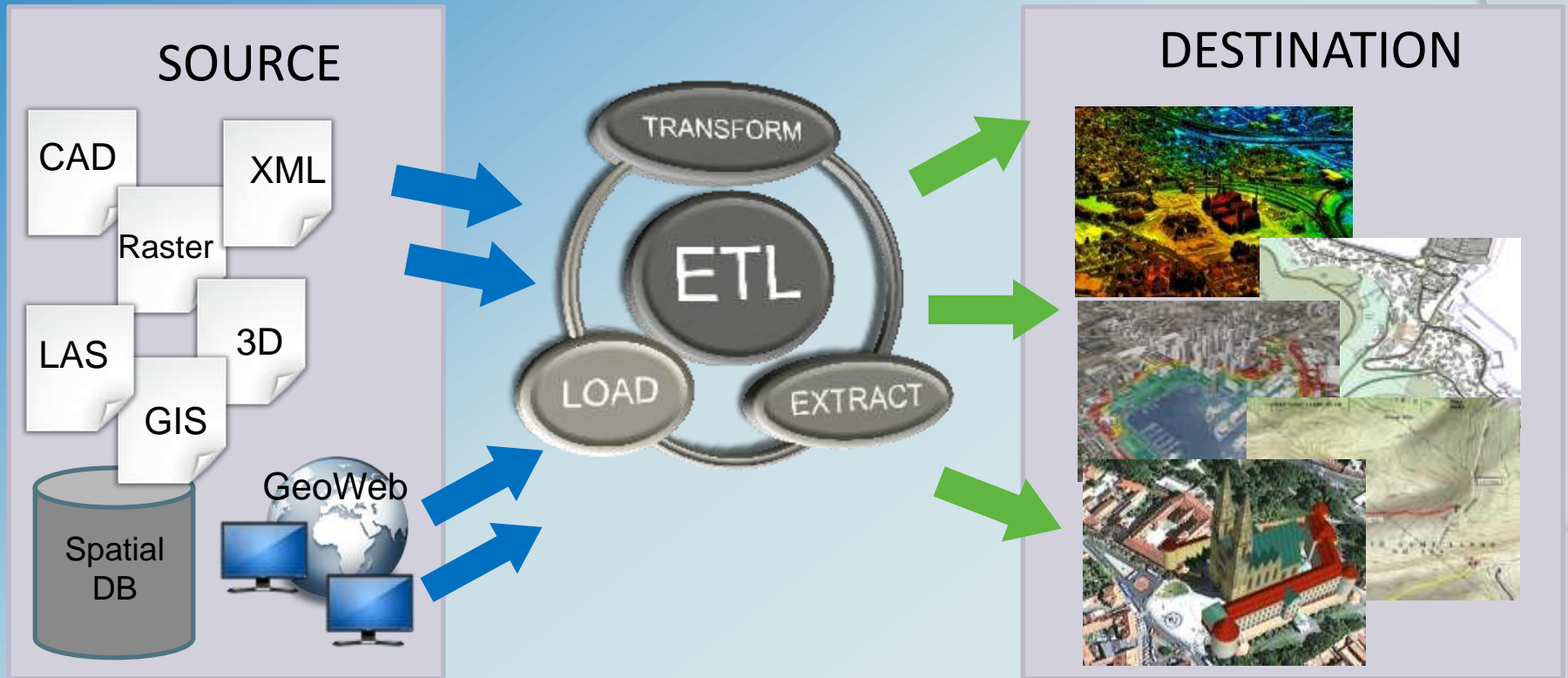
INSPIRE - Challenge

- ◎ Your data are organized rather differently from INSPIRE data provision requirements ?!
- ◎ INSPIRE SDI should:
 - ◎ **Combine** spatial data from **different sources**
 - ◎ **Share** spatial data between **public authorities**



Spatial ETL tools

- GeoKettle, Sextante, FME, SDI Talend Open Studio



INSPIRE Harmonization Principles

◎ Five Typical stages:

1. Evaluation

- Assess source/destination datasets and schema

2. Assembly

- Assess the diversity of source data types: vector, raster, GIS, database, XML, 3D, non-spatial, text, ...

3. Transformation

- Schema mapping (feature type, attribute name, new attribute creation, code lists,...)

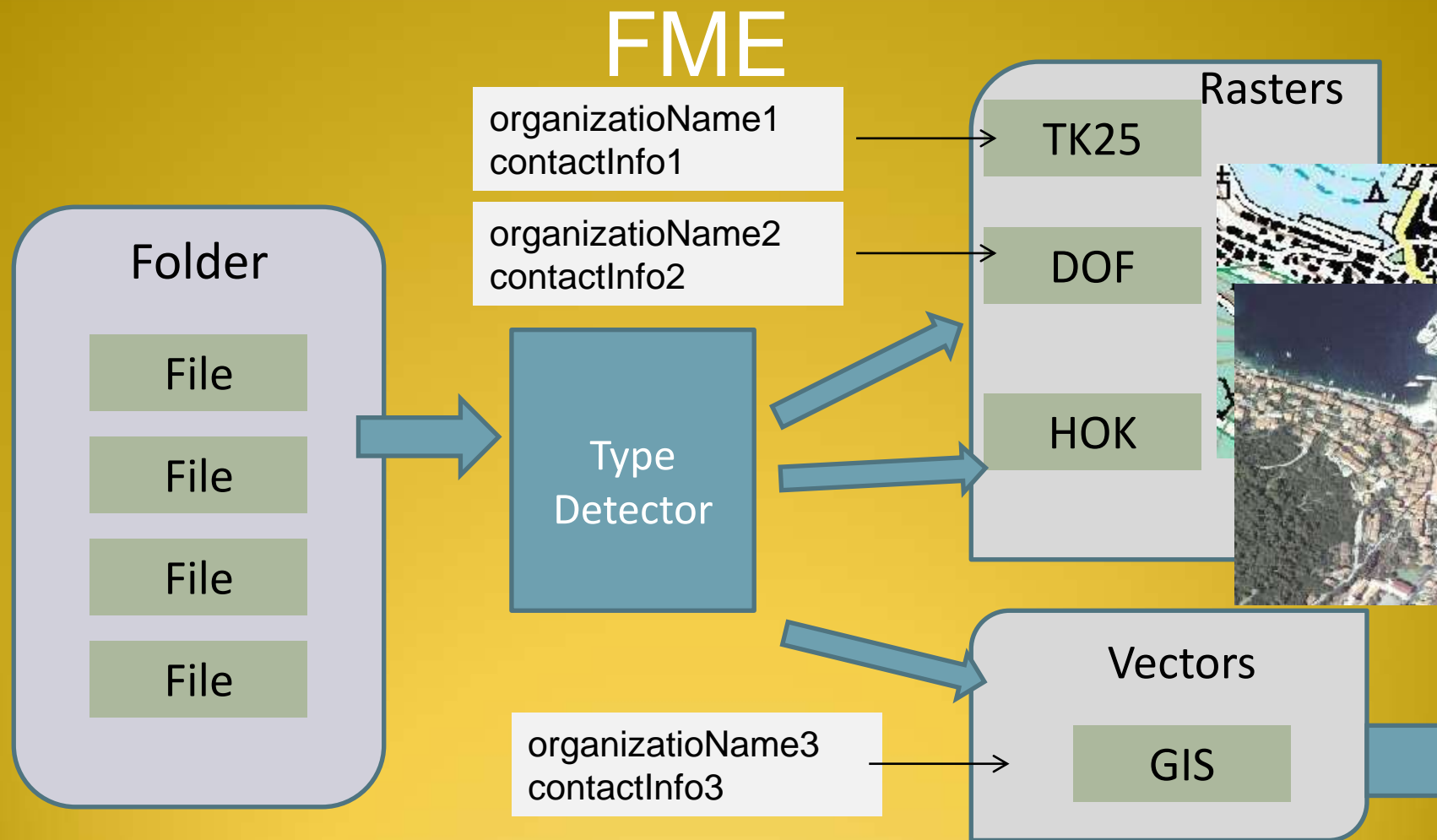
4. Validation

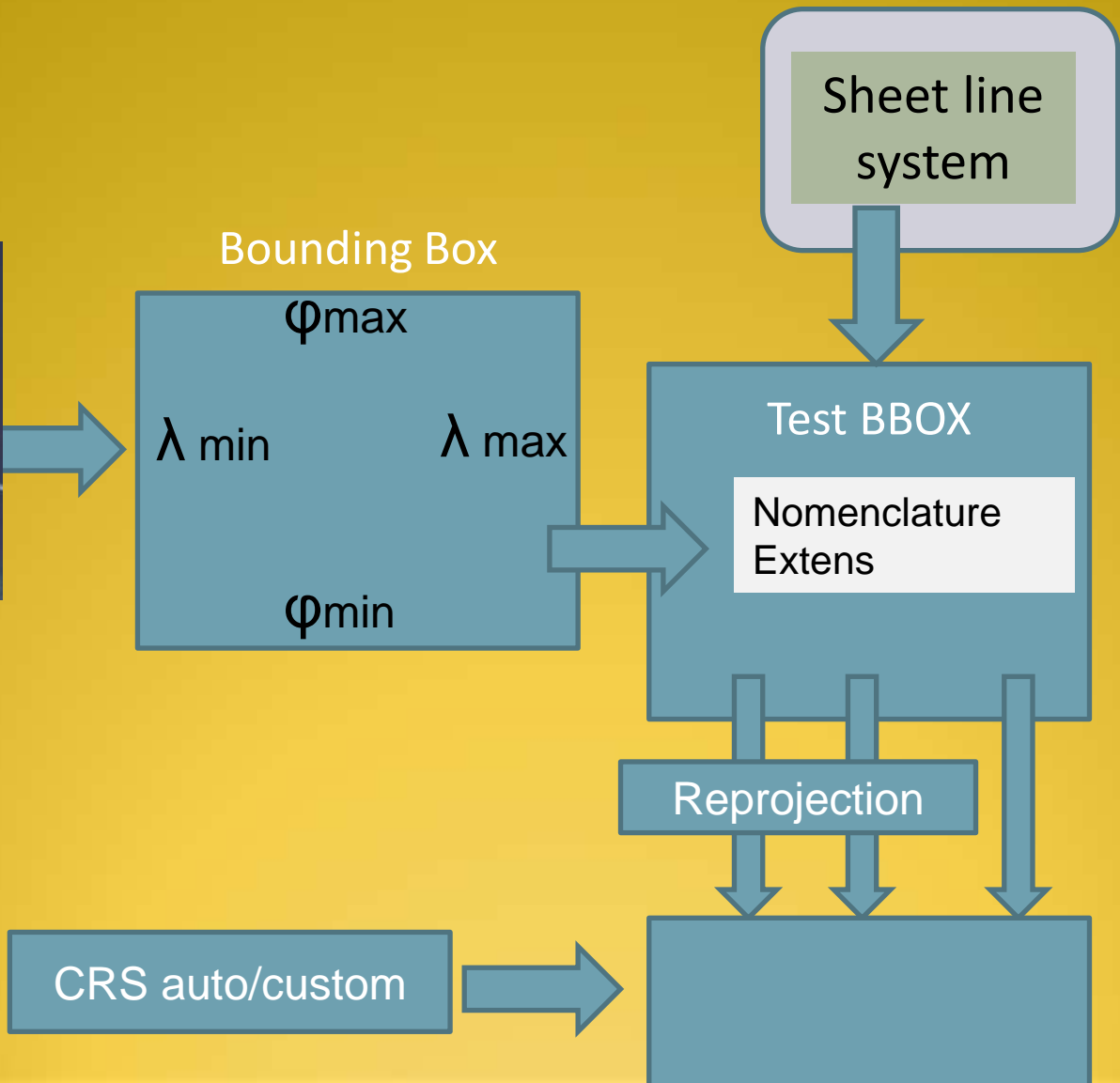
- Data integrity

5. Publication

- Produce INSPIRE compliant GML, publish on geo web server of choice

Harmonization process





Schema mapper

- feature type
- attribute name
- code lists

dateStamp
Distribution

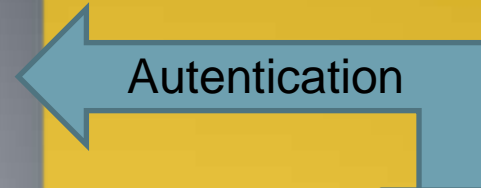
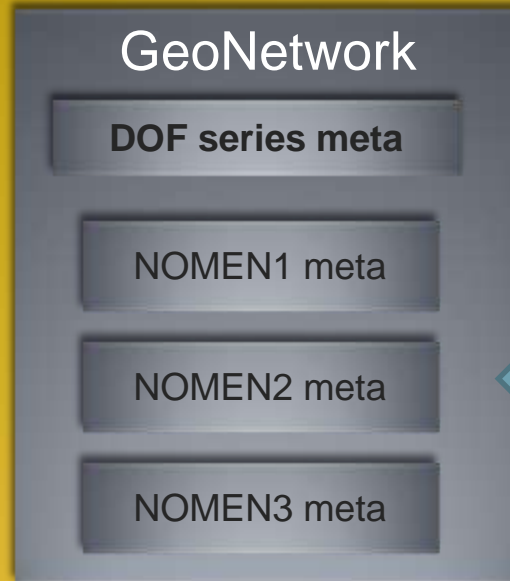
GDAL
Compression
Pyramidal levels

NOMEN1 -4

NOMEN1 - 8

NOMEN1 -16

...

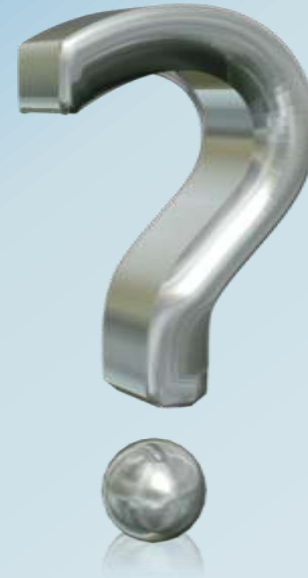


```
XML
?xml version="1.0" encoding="UTF-8"?>
...
<gmd:dateStamp>
  <gco:Date>DATE</gco:Date>
</gmd:dateStamp>
....
<gmd:CI_ResponsibleParty>
  <gmd:organisationName
    <gco:CharacterString></gco:CharacterString>
  </gmd:organisationName>
  <gmd:contactInfo>
    <gmd:CI_Contact>
      <gmd:address>
        <gmd:CI_Address>
```



Thank you!

Questions?



For more information:

Dragan Divjak
dragan.divjak@list.net

Irena Mitton
irena.mitton@list.net

li:st

location intelligence
spatial technologies