

# Litto3D®

## a 3D seamless representation of French coastal areas



LEADING ENGINEERING COMPANY  
IN GEOGRAPHIC INFORMATION



SDI Days - 8th Cartography and Geoinformation Conference  
Zagreb - 28 September 2012

IGN FRANCE INTERNATIONAL MAPS THE WORLD'S COMPLEXITY

# PRESENTATION SUMMARY

- **1- Elements of context**
  - *Coastal areas at stake*
- **2- Needs for geo information**
  - *At national level*
  - *For local collectivities*
  - *French solution*
- **3- Litto3D®**
  - *Starting point*
  - *Mapping work – Scan littoral®*
  - *Updating work : prototype and production of Litto3D®*
  - *Applications of Litto3D®*



# Elements of context

***Coastal areas : location with strong economical stake...***

***... fragile and threatened***

*For instance by :*

- **Erosion**





# Elements of context

***Coastal areas : location with strong economical stake...***

***... fragile and threatened***

*For instance by :*

- Erosion
- Submersions, storms



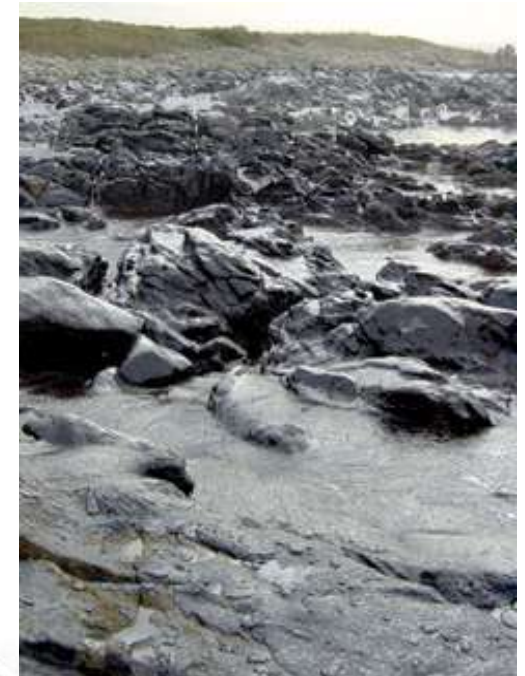
# Elements of context

***Coastal areas : location with strong economical stake...***

***... fragile and threatened***

*For instance by :*

- Erosion
- Submersions, storms
- **Pollutions**
  - Oil slicks
  - Nitrates conveyed by streams
  - Pollutants dumped at sea



# Elements of context

***Coastal areas : location with strong economical stake...***

***... fragile and threatened***

*For instance by :*

- Erosion
- Submersions, storms
- Pollutions
- **Urbanization**





# Elements of context

Following ERIKA and PRESTIGE disasters, Europe awarded the importance of coastal areas and recommended since 2002 to proceed **detailed inventory of coastal areas**.



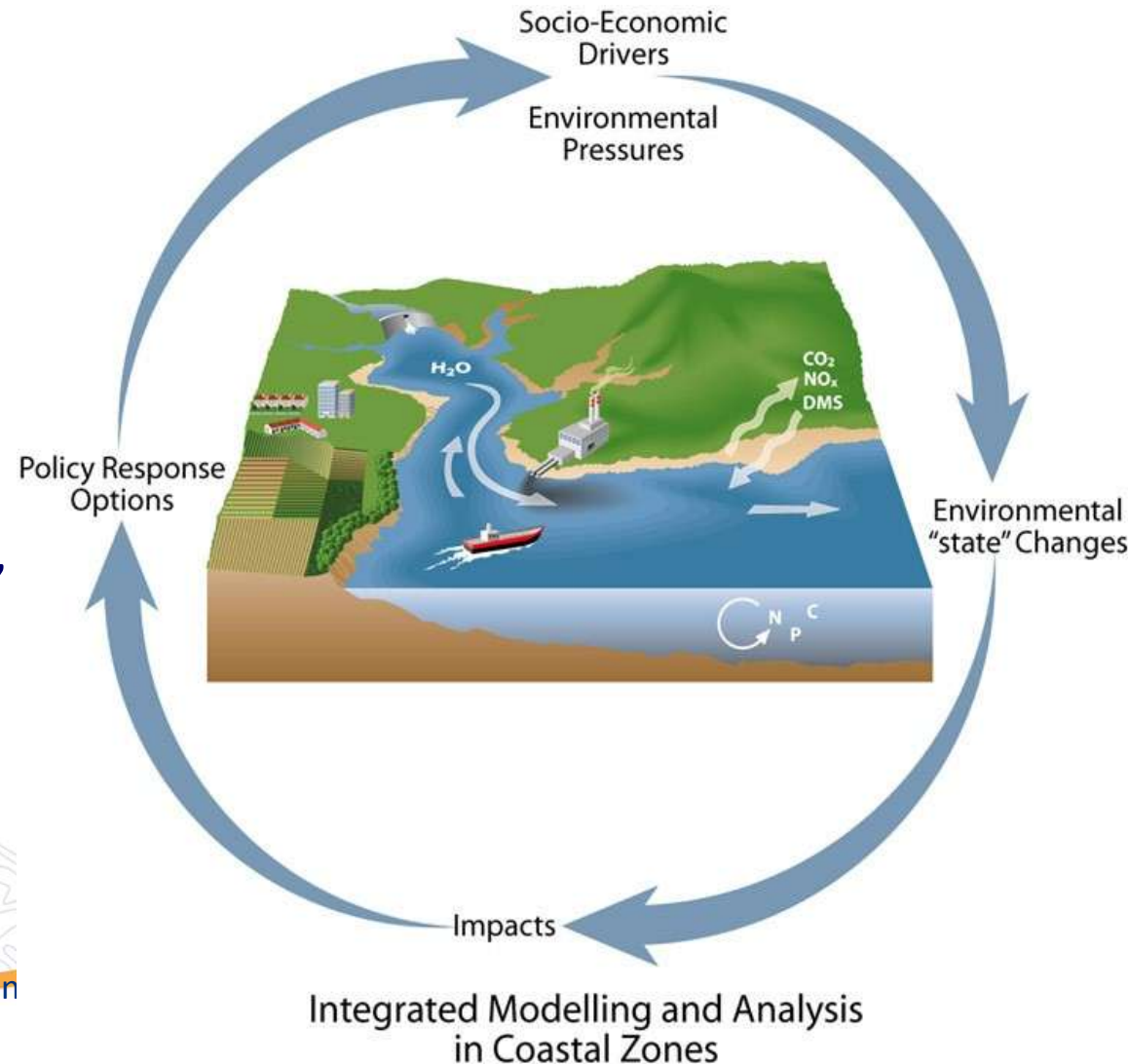
Also recommendations from EUROSION projet



# Needs for geo-information

## At national level:

- ecosystem protection,
- risks prevention,
- spatial planning,
- exploitation of resources,
- research and scientific studies,
- defence and national security,
- Integrated Coastal Zone Management (ICZM).





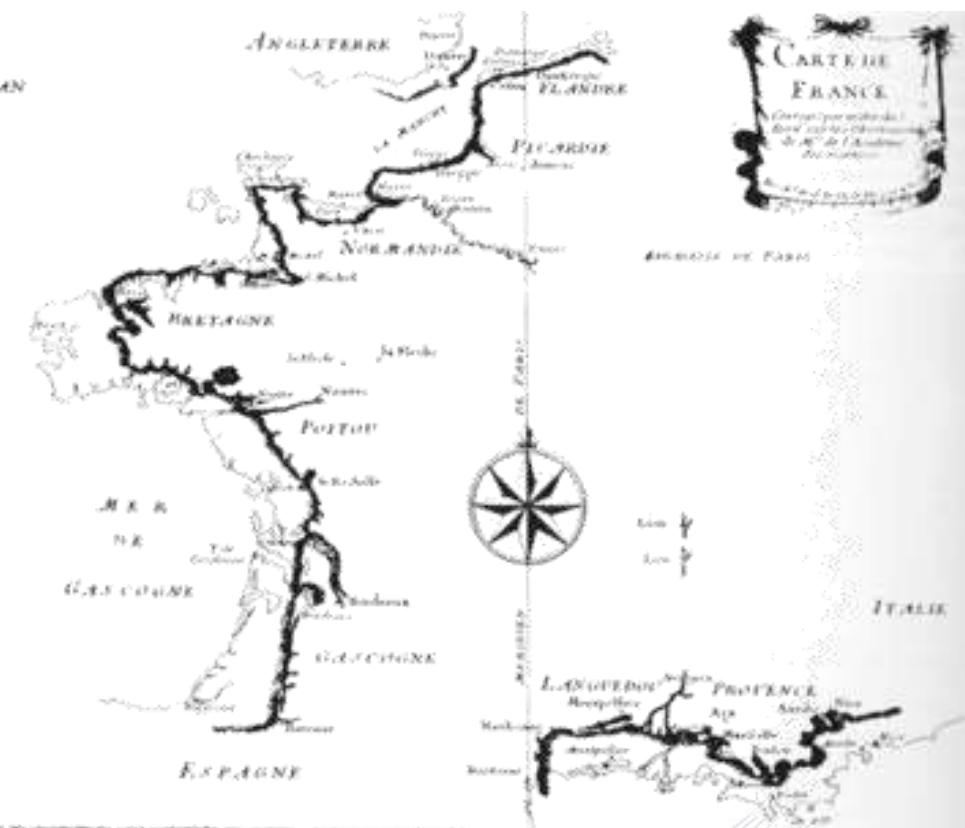
# Needs for geo-information

## For local collectivities:

- Coastal Act application within urbanism and spatial planning documents
- Protection against coastal erosion
- Harbours equipments construction
- Environmental protection for sensible areas
- Aquaculture, fisheries, seashore exploitation development
- Rescue plans (e.g. in case of submersion)
- Tourism attractiveness vs landscape conservation
- Recreation and leisure (beaches and nautical activities)

# Needs for geo-information

## French solution:



*Decree of April 29th, 2003*

**IGN** and **SHOM** have « to combine efforts for studying the best way to produce a Coastal Layer of Reference »

*Référentiel Géographique Littoral (RGL)*

# Litto3D® – starting point

## Nautical chart



Source SHOM

## Topographic map

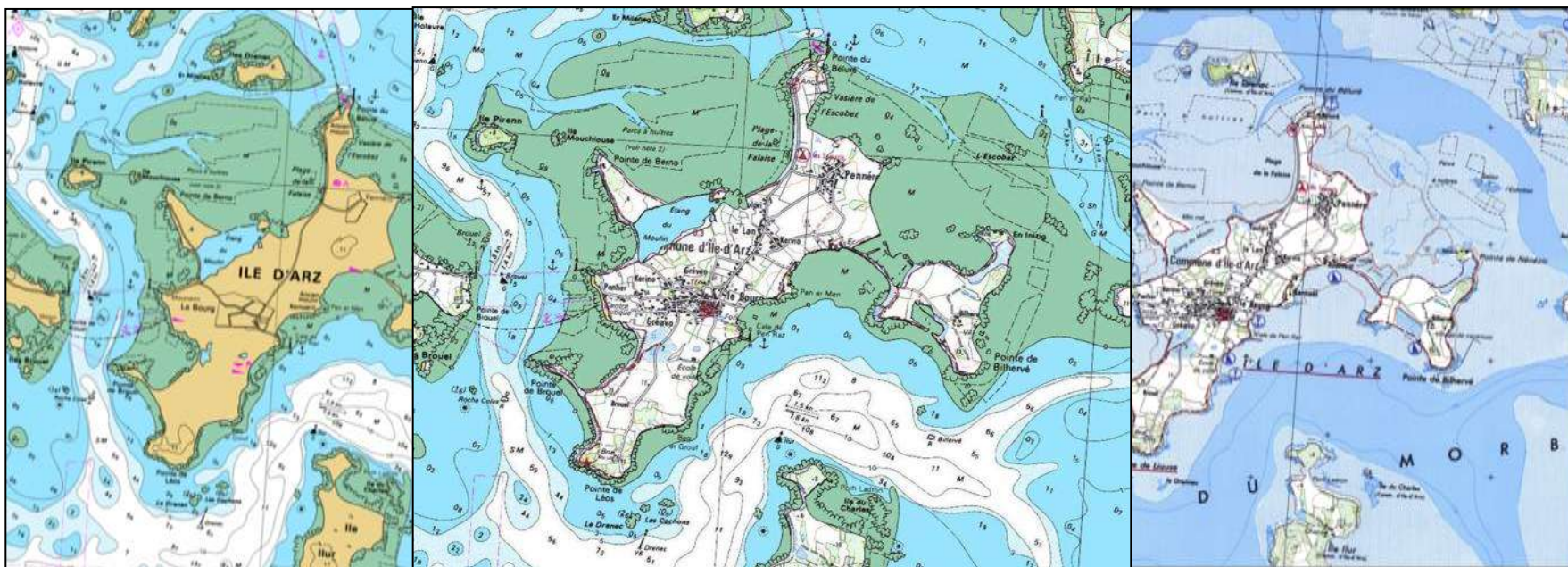


Source IGN



# Litto3D® – mapping work

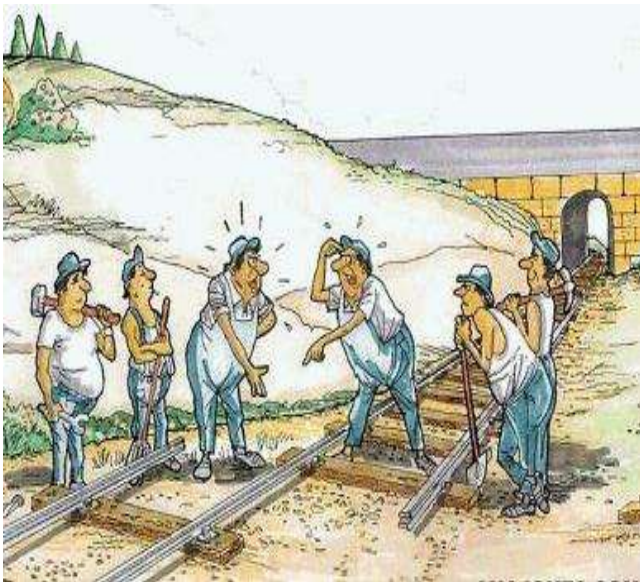
Merge to obtain product *SCAN Littoral*® without update



# Litto3D<sup>®</sup> – updating work

## ***SCAN Littoral<sup>®</sup>:***

Automatized process but the combination of both maps of different sources led to alteration of accuracy of resulting map

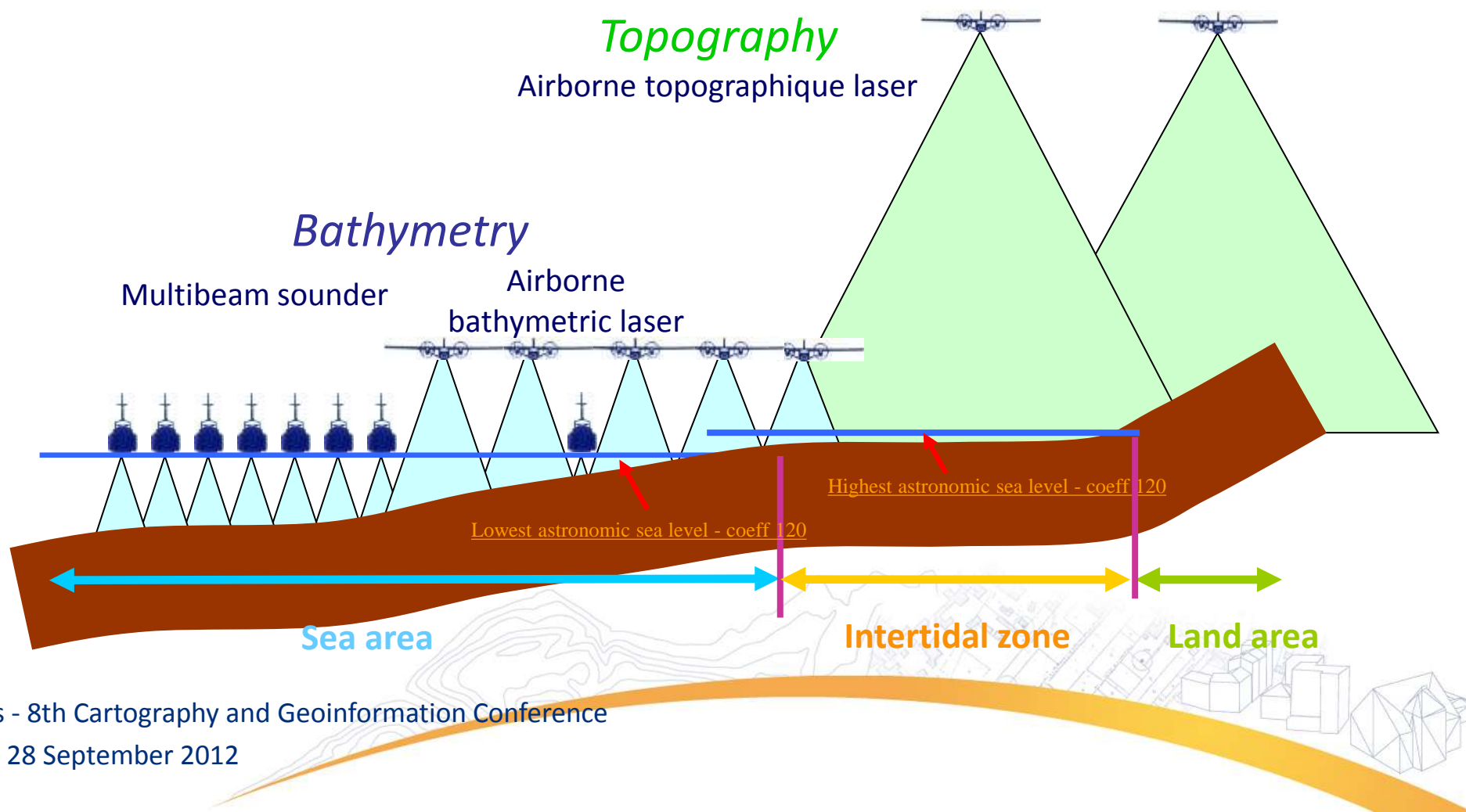


**A seamless product with  
homogeneous accuracy was  
required!**

**New acquisition process  
was needed !**

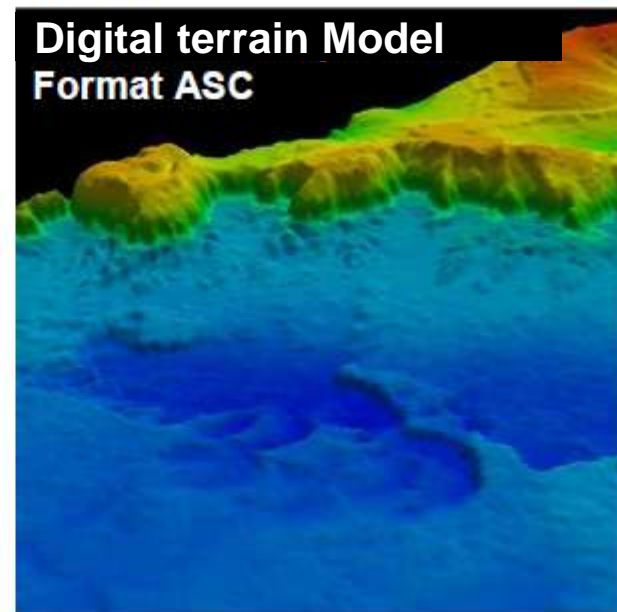
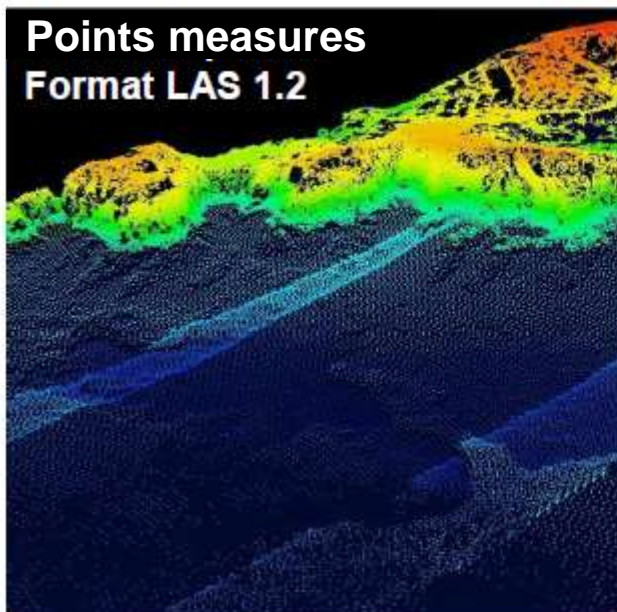
# Litto3D® – Process

## New acquisition process

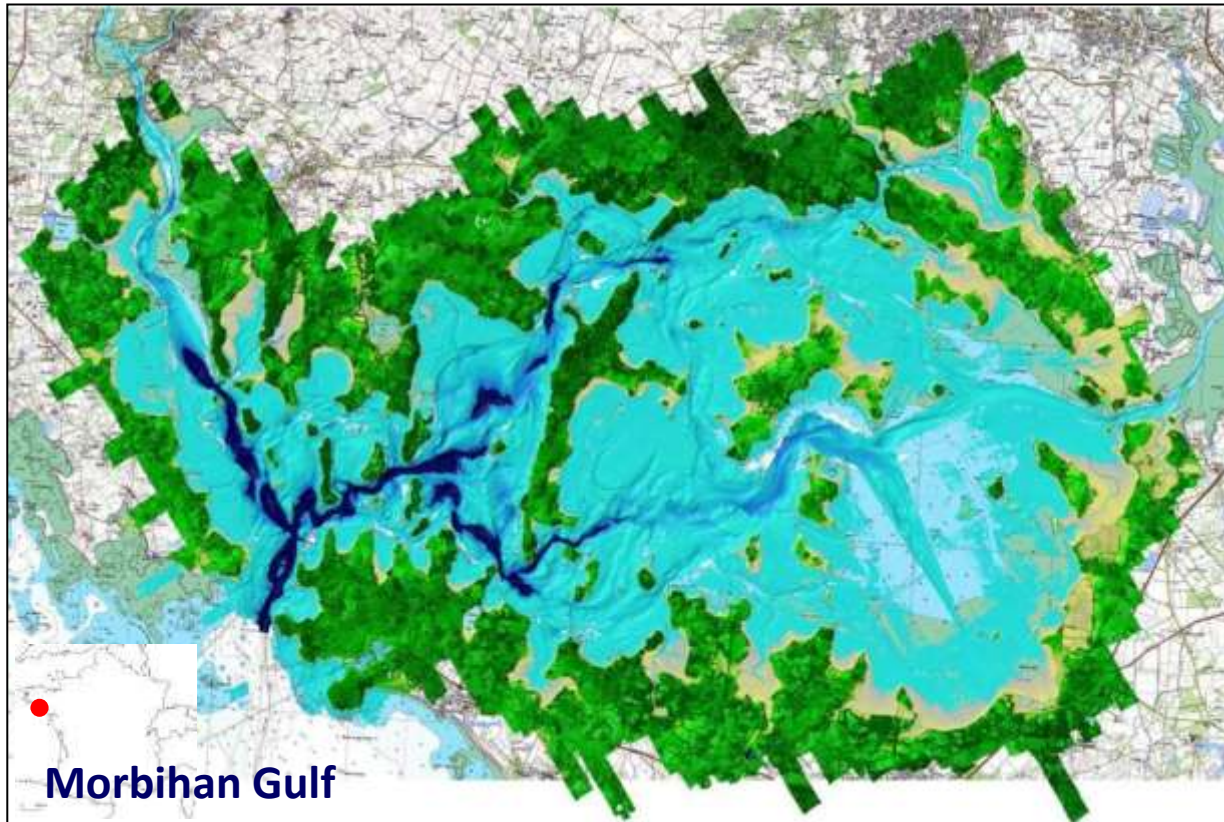




# Litto3D<sup>®</sup> – 3D data



# Litto3D® – Prototype results



Geographical extent Limited to:

- Landwards: 10m height, min 2 km
- Seawards: isobath 10m, min 2km

## Reached accuracies:

### landwards

< 1 m XY

< 30 cm Z

Delivered with metric resolution  
Vegetation, building extraction

### Seawards

< 2 m XY

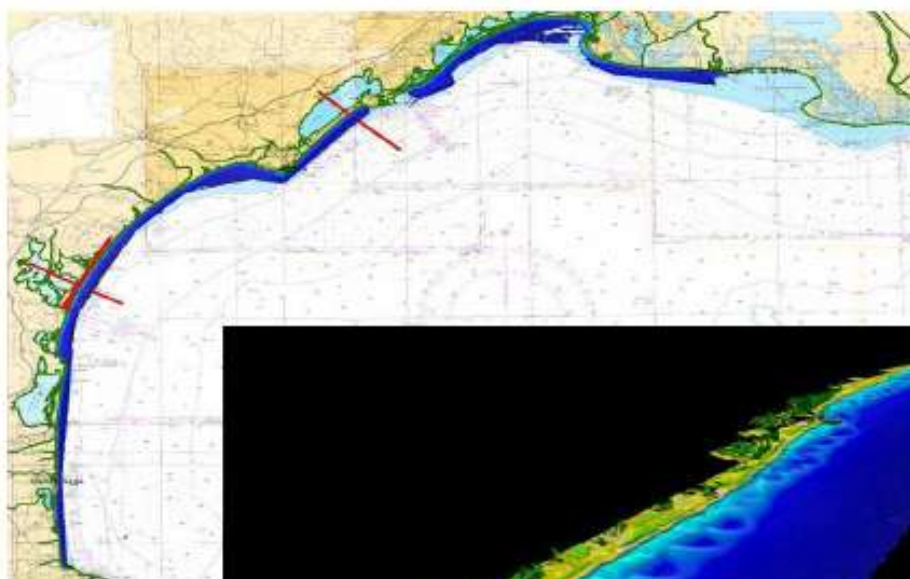
< 60 cm Z

Delivered with 5 m resampled resolution

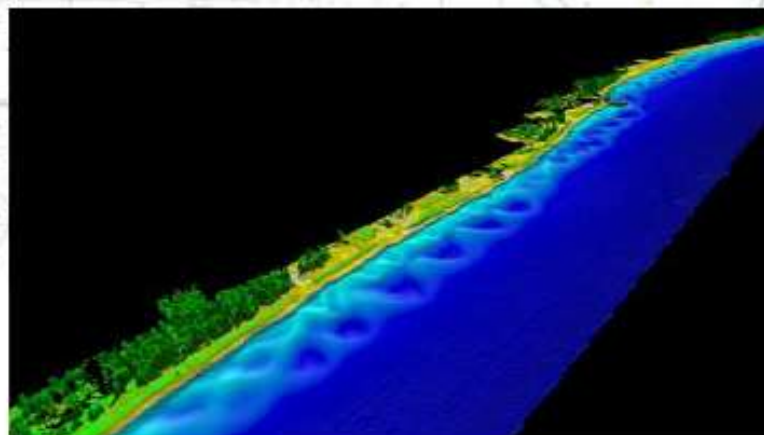


# Litto3D® – Production

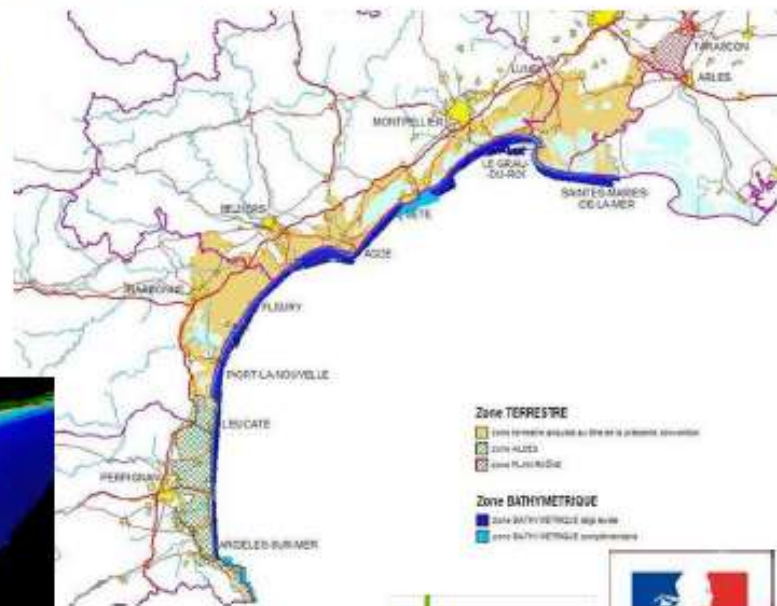
## Languedoc-Roussillon



2009



2010



**Zone TERRESTRE**

- Zone terrestre acquise au titre de la présente convention
- Zone ALDES
- Zone PLURISALDES

**Zone BATHYMETRIQUE**

- Zone BATHYMETRIQUE 100 mètres
- Zone BATHYMETRIQUE complémentaire





# Litto3D® – Production

## Var - ALDES

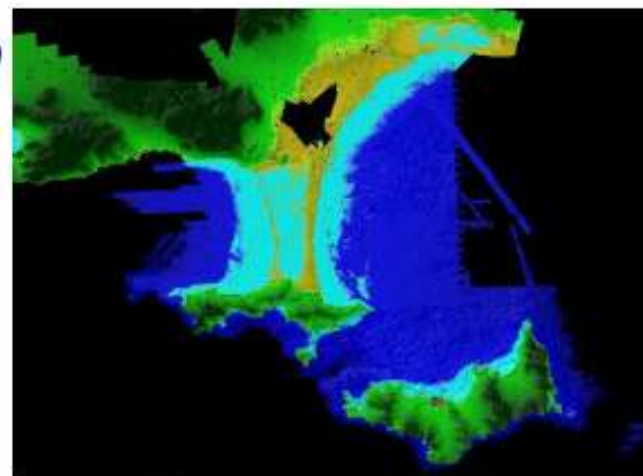


2010

Ministère  
de l'Écologie, de l'Énergie,  
du Développement durable  
et de l'Aménagement  
du territoire

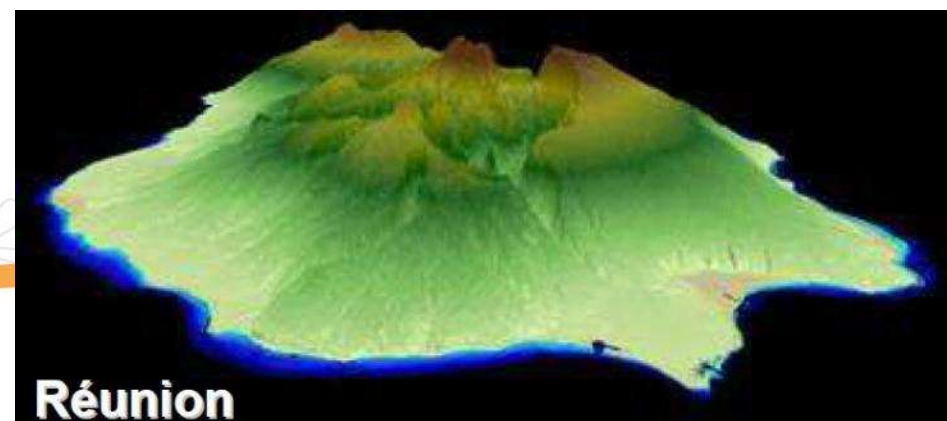
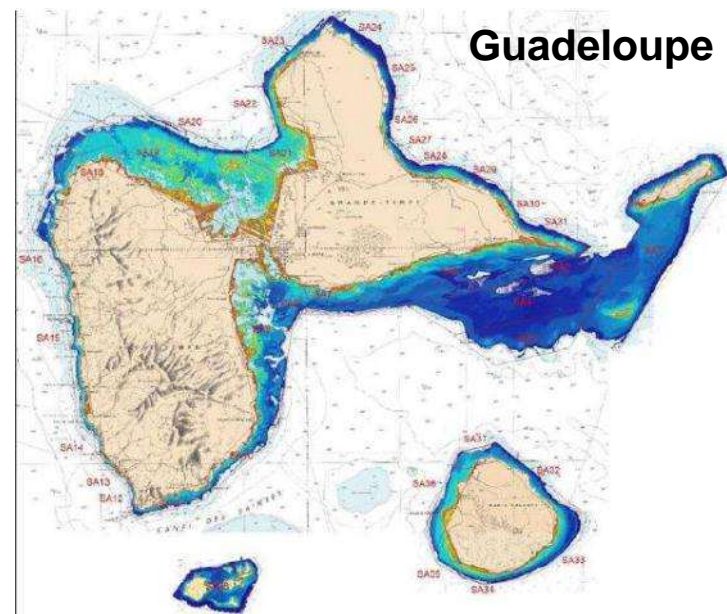


Ministère de l'Intérieur  
Direction Générale  
des Territoires  
Régionaux



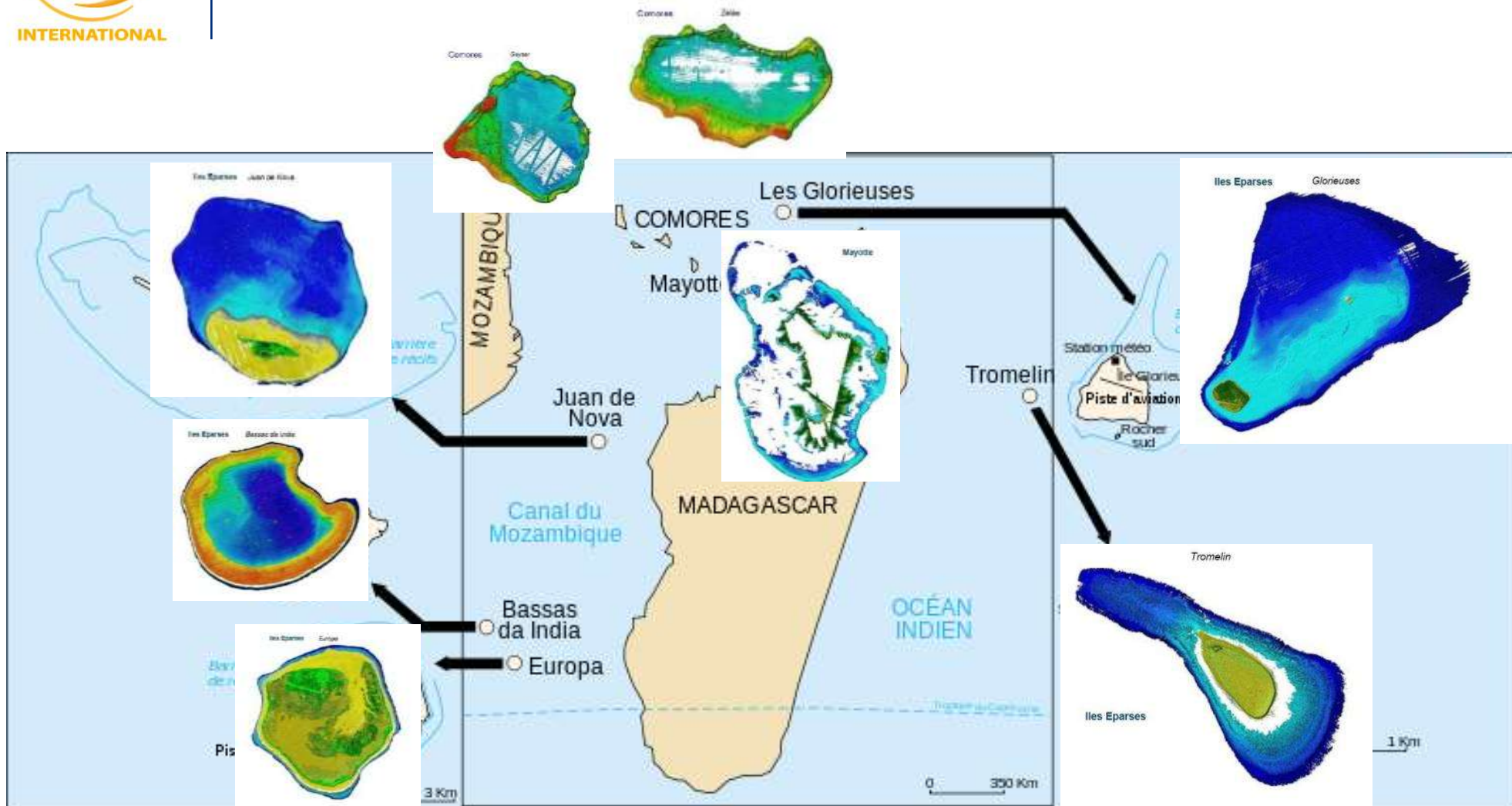
# Litto3D® – ultra-peripheral departments

2010 - 2011





# Litto3D® – other territories

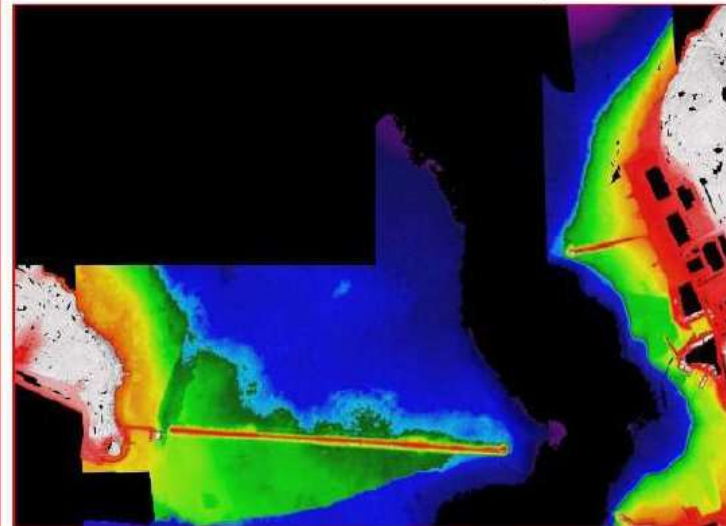
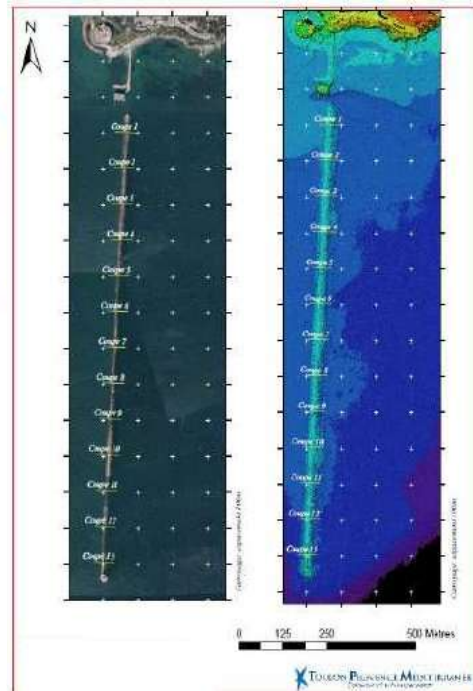




# Litto3D® – exemple of application

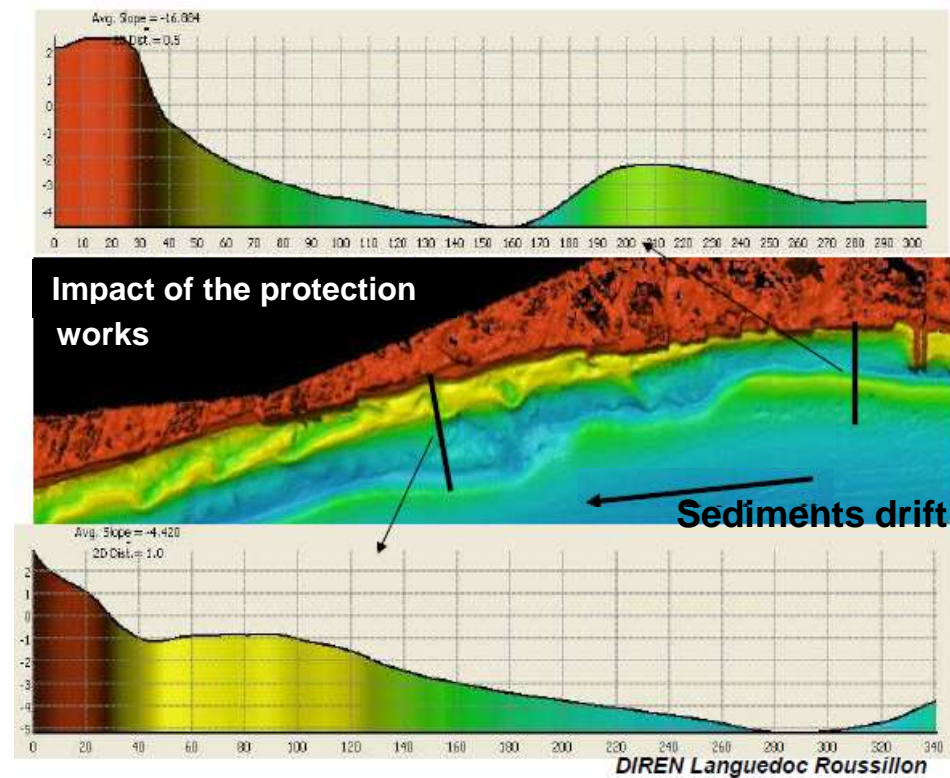
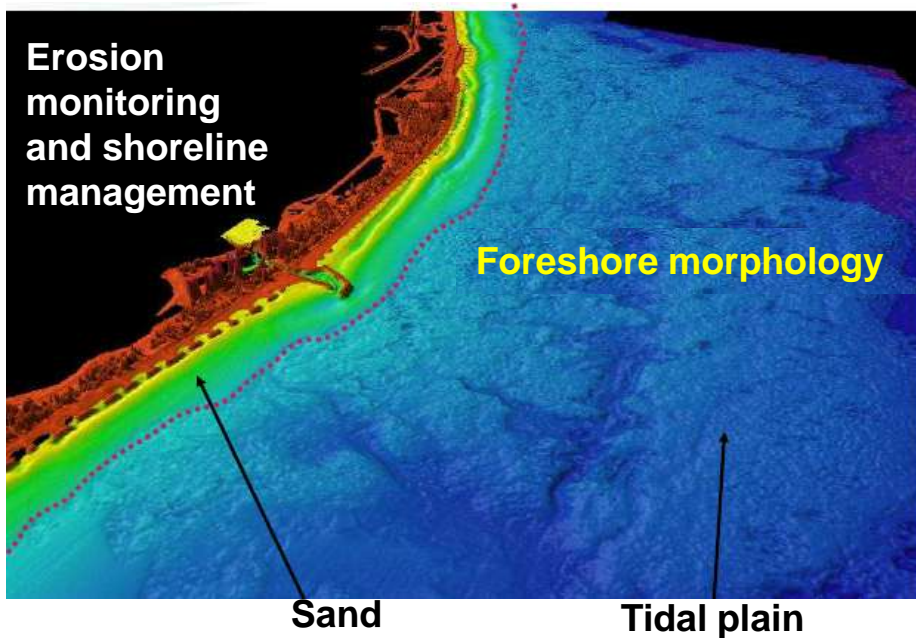


## *Toulon: port infrastructures management*



Reference data for the construction of Toulon' harbour great dyke.

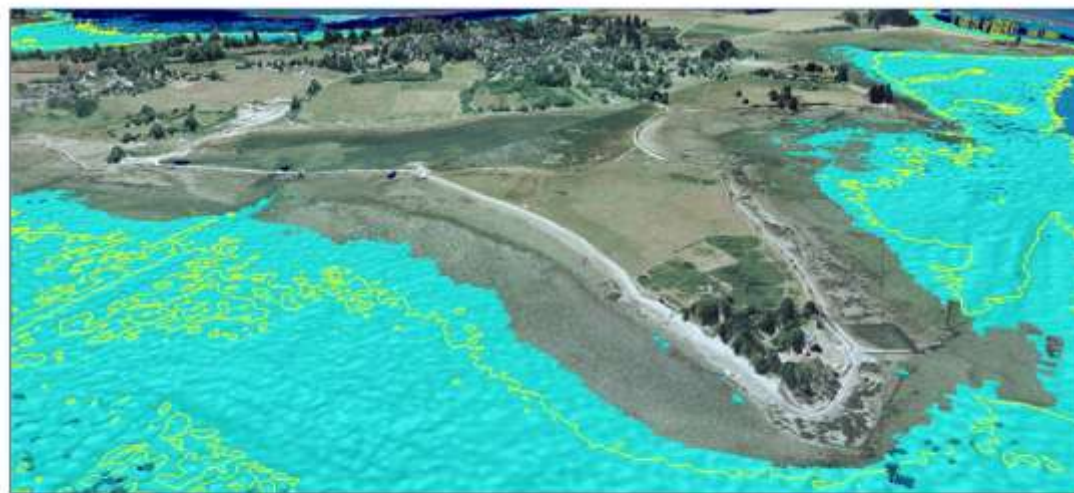
# Litto3D® – exemple of application



# Litto3D® – exemple of application

**Litto3D®**

Sea level rise simulation





# Litto3D<sup>®</sup> – other applications

- **Public Maritime Domain perimeters delimitation**
- **Protection of environnement: maps of benthic habitats**
- **Pollutants sea dispersion**
- **Coastal risk prevention**
- ....



# Litto3D<sup>®</sup> Conclusion

- Funded by public money (EU funds, State, Regions, Departments, Local collectivities, IGN, SHOM)
- Provide geo information to address several EU directives (WFD, Flood, Maritime Milieu Strategy...)
- Obeying to INSPIRE principles
- Integrated as spatial layers of the French NSDI
- Display through [www.geoportail.fr](http://www.geoportail.fr)
- IGN – SHOM warrant of data acquisition, processing and quality
- IGN France International in charge of the promotion of this product worldwide



THANK You for your attention



*hpichon [at] ignfi.fr*

**IGN France International**

8 rue du Sentier - 75002 PARIS

France

Tél : +33 1 42 34 56 56

Fax : +33 1 42 34 56 51

info@ignfi.fr - [www.ignfi.com](http://www.ignfi.com)